

EasIR™ is an easy-to-use infrared camera.



- Electricity Inspection
- Building Diagnostics
- Technical Diagnostics
- Veterinarian Helper
- Predictive and Preventative Maintenance

Guide Infrared, Infrared Guide



- AGT: Auto Gate Technology
- Auto Focus
- 2.0 Megapixel CMOS
- Large Storage Capacity
- Rugged and Ergonomical Design
- Friendly Interface for Convenient Use
- IR Fusion Technology
- Flexible Battery Compatibility
- Low Cost, High Performance

EasIR™-4 is a new infrared camera of Guide infrared, breaks the IR world with the high performance and low price. Designed for tough work environments and entry-level users, EasIR™-4 is far more robust and shock-resistant for any tough working environment and it is easy to operate and allows for the learners to operate without being trained and take the inspection easily with one hand. Featured with the latest IR fusion technology, it helps you pin-point the problem exactly with the most efficiency. EasIR™-4, easy for your work.



EasIR™-4

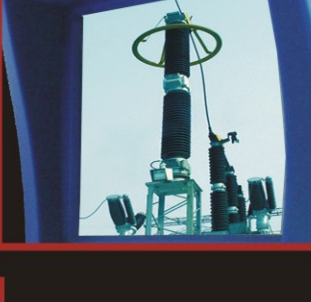
## 1 AGT: Auto Gate Technology

Wuhan Guide's newly developed innovative auto gate technology plays as external shutter plus lens cap. Different from traditional built-in shutter, external shutter is free from all disturbing heat radiation caused by the optics and electronics inside, thus delivers crisper and uniform thermal image, as well as more stable and accurate temperature reading. It closes automatically in off mode, providing double protection to the sensitive optics and detectors.

### Auto Focus

Thanks to the successfully automatic focusing function, both clear infrared and visual image can be focused by simply pressing one button.

## 2



### 2.0 Megapixel CMOS

Showing the vivid IR world is not enough for the EasIR™-4. Integrated high-resolution CMOS, EasIR™-4 can also bring you into an extremely crisp real world.

## 3



### Large Storage Capacity

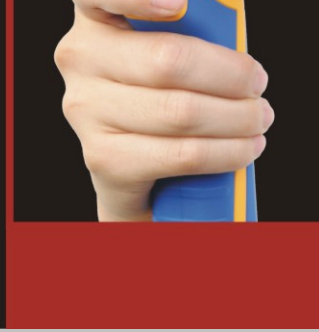
Benefiting from 2G SD card inside and the capability for enlarging to a larger capacity, EasIR™-4 enables you to save as many photos as you can without changing card frequently.

## 4



### Rugged and Ergonomical Design

With its rugged, slip-resistant grip design and the ability of resisting drop from 2m height, EasIR™-4 ensures high work efficiency and reliability in any tough environment. Even those left handers will find it is easy to use the camera with just one hand due to its ergonomically oriented holding design.



### IR Fusion Technology

Guide's new Thermal Fusion Technology allows you to overlay the thermal image directly on the corresponding visual image. It would help you identify where the problem exactly is and give the solution.

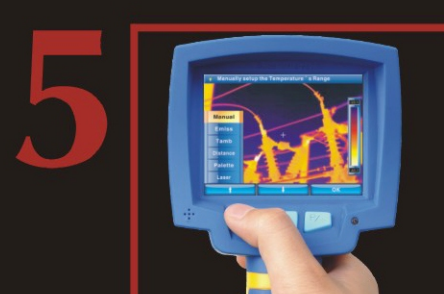
## 7

### Flexible Battery Compatibility

No need to worry about the power supply, ordinary AA Alkaline battery can be available everywhere which ensures you an uninterrupted high efficient work.



## 6



### Friendly Interface for Convenient Use

The three-button is easy to use and allows for the user navigate freely with the slight push of a thumb. The friendly and intuitive menu on the 3.6" color LCD enables the user to operate the camera easily and comfortably without reading manual.

## 5



## 8

### Low Cost, High Performance

Offered by an extremely reasonable price, EasIR™-4 provides not only all basic functions an infrared camera should have but also unique features that never seen in similar products, such as the auto focus and AGT functions, 2.0 Megapixel CMOS and unique menu navigation for an easier operation. EasIR™-4 makes possessing one's own professional thermal IR tool for daily use come true.

## 8

### Visual

### Measurement

### Image Storage

### Optional accessories

### System Status Indication

### Laser Locator

### Power Supply

### Environmental Specification

### Interfaces

### Physical Characteristics

TECHNICAL SPECIFICATIONS	
<b>Thermal</b>	
Detector Type	Microbolometer UFPA (160 x 120 pixels, 25 μm)
Spectral Range	8-14 μm
Field of View	20.6° x 15.5°
Focus	11mm
Thermal Sensitivity	≤0.1°C @30°C
Image Frequency	50HZ PAL/60HZ NTSC, non-interlaced
Image Display	256 level, 8 palettes (Rainbow, Iron, B&W, etc)
<b>Visual</b>	
Built-in Digital Video	CMOS Sensor: 1600 x 1200 pixels, 2" colors
External Display	3.6" TFT high resolution color LCD
<b>Measurement</b>	
Temperature Range	-20°C ~ +250°C (350°C optional)
Accuracy	±2°C or ±2% of reading
Measurement Modes	Spot analysis, IR Fusion
<b>Image Storage</b>	
Type	SD card (2G)
File Format	Standard JPEG
Voice Annotation	60 seconds
<b>Optional accessories</b>	
Telephoto Lens	30mm FOV: 7.6° x 5.7°
Wide Angle Lens	7mm FOV: 32° x 24°
Sun Shield	Yes
<b>System Status Indication</b>	
LCD Display	Status of battery, indication of power
<b>Laser Locator</b>	
Classification	Semiconductor A1GaInP Diode Laser
<b>Power Supply</b>	
Type	110/220V AC adaptor AA Alkaline battery AA rechargeable battery
Operating Time	Over 2 hours continuous operation
Charging System	In camera or in battery charger
<b>Environmental Specification</b>	
Operating Temperature	0°C ~ +50°C
Storage Temperature	-20°C ~ +60°C
Humidity	Operating and storing 10% to 95%, non-condensing
Encapsulation	IP54
Shock	Operational: 25g, IEC 68-2-29
Vibration	Operational: 2g, IEC 68-2-6
Drop Test	2 meters
<b>Interfaces</b>	
USB2.0	Real-time image (thermal & visual), measurement, and voice transfer to PC
<b>Physical Characteristics</b>	
Size	111mm x 124mm x 240mm
Weight	0.73kg (including battery)
Color	Yellow&blue interlaced or red&black interlaced alternative