



Highly Refined IR Thermography Camera

Visual and thermal imaging
Precision non-contact temperature measurement

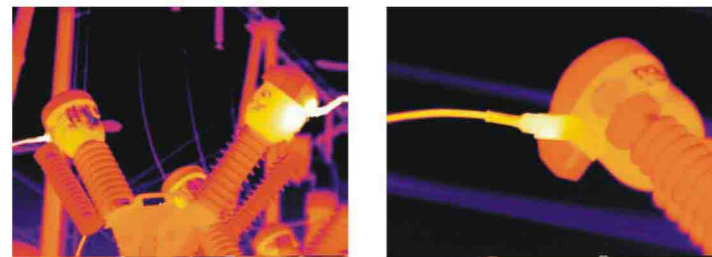
GUIDIR® IR928+

Features & Benefits

- Rugged, durable and easy to use
- Efficient thermal and visual imaging
- Precise reliable temperature measurement
- Fully onboard image processing
- Large capacity radiometric image storage
- Professional inspection and reporting software
- License free and rapid delivery



Refined from powerful portable IR thermal camera GUIDIR® IR928+, integrating high resolution visual camera, GUIDIR® IR928+ offers more robust performance and more reliable functionality at an affordable price as usual. Working with professional GUIDIR® post-analysis software, GUIDIR® IR928+ greatly enhances efficiency and productivity of inspection programs. This is what professional thermographers really want.



Standard Configuration

- Cameras (infrared and visual)
- 40mm IR lens
- 4" LCD display
- 0.25" LCD viewfinder
- 256MB CF card and card reader
- Two rechargeable Li-ion batteries
- Battery charger
- AC adapter
- Video cable
- Communication protocol
- Post-analysis software
- User manual
- Carrying case



Technical Specifications

Imaging Performance	
THERMAL	
Detector Type:	Uncooled FPA Microbolometer (320× 240 pixels, 45 μ m)
Spectral Range:	8-14 μ m
Field of View:	21°× 15°
Image Frequency:	50Hz PAL/ 60Hz NTSC, non-interlaced
Thermal Sensitivity:	0.08°C at 30°C
Electronic Zoom:	×2, ×4, ×8 interpolating
VISUAL	
Built-in Digital Video:	CMOS Sensor, 640 x 480 pixels, 2 ²⁴ colors
Image Presentation	
External Display:	4" high resolution color LCD (TFT)
Viewfinder	0.25" built-in high resolution color LCD (TFT)
Video Output:	PAL/ NTSC, composite video
Measurement	
Temperature Range:	-20°C - +500°C (up to +1500°C optional)
Accuracy:	±2°C or ±2% of reading
Measurement Modes:	Spot / manual (up to 4 moveable), spot / automatic placement at max, area (up to 4 moveable) displaying either max, min, or average, isotherm, line profile, auto alarm
Emissivity Correction:	Variable from 0.01 to 1.00 (in 0.01 increment)
Measurement Features:	Automatic correction based on user input for emissivity, reflected ambient temperature, distance, relative humidity, atmospheric transmission and external optics
Image Storage	
Type:	Removable 256MB Compact Flash Memory card
File Format:	IMG (an individual file consists of infrared image, visual image and voice annotation if any)
Voice Annotation:	30 seconds per file (more than 30 seconds optional)
Laser Locator	
Classification Type:	Class 2 semiconductor laser
Power System	
Battery Type:	Rechargeable Li-ion Camcorder battery, field-replaceable
Battery Operating Time:	Over 3 hours continuous operation
External Power Operation:	AC adapter 110/ 220 VAC, 50/ 60Hz
Environmental	
Operating Temperature:	-20°C - +60°C
Storage Temperature:	-20°C - +60°C
Humidity:	Operating and storing 10% to 95%, non-condensing
Encapsulation:	IP54 IEC 529 housing
Shock:	Operational: 25G, IEC 68-2-29
Vibration:	Operational: 2G, IEC 68-2-6
Interfaces	
Remote Control:	RS232 serial communication
Live Video Transmission (Optional):	Up to 750m to a remote monitor
Physical Characteristics	
Weight:	1.6Kg (including battery)
Size:	148mm× 104mm× 108mm (standard model)
Tripod Mounting:	1/4" - 20

Wuhan Guide reserves the right to make changes without prior notice.

Guide® Wuhan Guide Infrared Technology Co., Ltd. Add: NO.26 Shucheng Rd, Wuhan, 430070, P.R.China

Tel: 86-27-87671925 87671926 87671991 87671983 Fax: 86-27-87671927 Http://www.guide-infrared.com E-mail: overseas@guide-infrared.com